



The cutting edge of XCaliper
keeps growing

XCaliper™ 5.1

stronger,
brighter,
sharper!

The Software Solution for Machine Vision

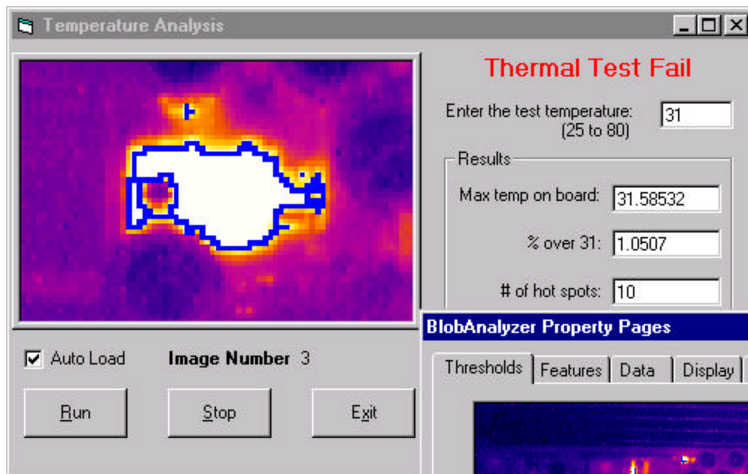
For eight years, XCaliper software has been:

... helping you create powerful, flexible, and affordable solutions to your machine vision problems.

... providing the tools you need to meet the challenging demands of online inspection systems in the factory environment.

... expanding the tool set and features you can use to acquire precision results at production speeds.

Here's what XCaliper 5.1 has grown into, so far



- ◆ Tried and true tools for measuring distance, intensity, and color — tools whose application is as unlimited as your imagination.
- ◆ Image filtering and morphological operations to change unusable images into images you can work with.
- ◆ New, analyzable images created by combining and performing calculations on captured images.



- ◆ Pattern-recognition capabilities you can fine-tune for OCR, or for finding any other pattern you need to identify.
- ◆ True temperature analysis of infrared images. Find hot spots or cold spots; determine the overall temperature and thermal statistics along a line, in a parallelogram, in a polygon of any size or shape, and in hot or cold blobs.
- ◆ Speedy and sharp detection and decoding of barcodes and data matrix features.

And that's not all!

Clarify your infrared images by displaying them in any of a wide variety of pseudo-coloring schemes — or create your own scheme. And call attention to particular temperature ranges with splashes of contrasting colors.

Rotate, scale, and translate the tools—on the spot—to place them with precision on each image in a production environment, no matter the shifts from one image to the next.

Correct for image distortion, such as images of warped or uneven surfaces, images from a fish-eyed lens, or images captured using non-orthogonal camera angles.

Monitor your production images in several different views with several different zoom levels at once.

Adjust your camera directly from the image manager's property pages.

Create and test your application in a development environment, then adjust it quickly and easily in your production environment.

It's hard to move your production line faster than the swift and precise XCaliper. With pipelined acquisition using multiple buffers, your XCaliper-based application can inspect images as fast as your production line can pass them in front of the camera.

Refer to XCaliper's excellent documentation in any of three convenient media: the manual, the Windows online help, or the Acrobat Reader file.

XCaliper brings you truly visual designing

See the effects of your work on the screen as you set up your image and your analysis tools in design mode.

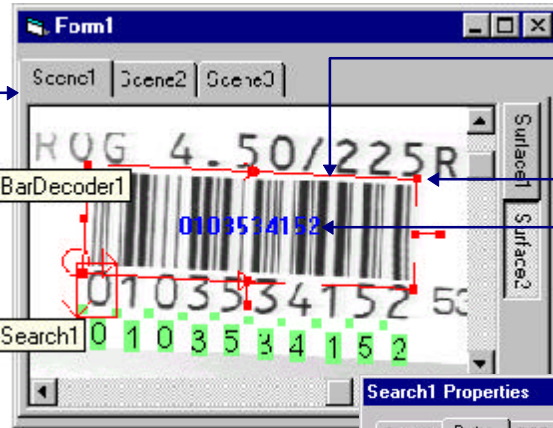
It's easy to fine-tune much of your program —before you even begin to write code.



Click and drag the ImageDevice control directly onto the form.

Then use the ImageDevice's property pages to load an image, adjust the zoom level, add more scenes and surfaces, and change nearly any other property or execute nearly any other method.

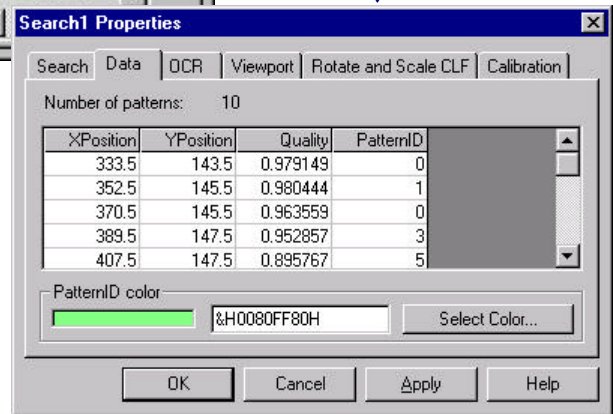
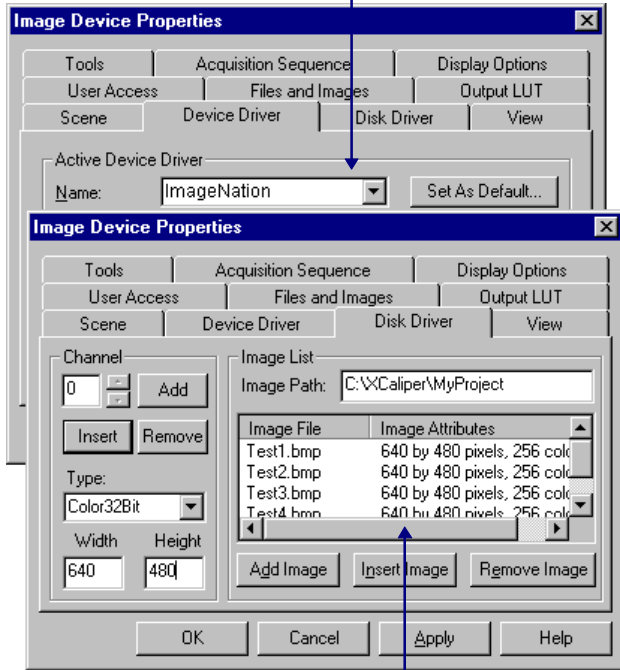
Change to a different frame-grabber as easily as you change any other ImageDevice property.



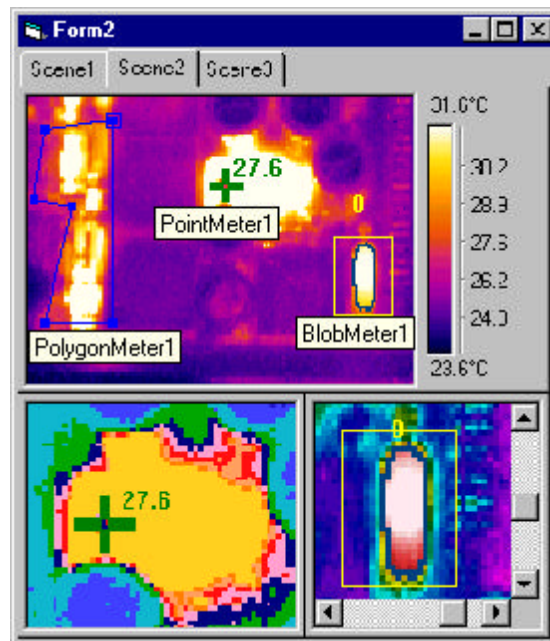
Click and drag analysis tools directly onto the image at the correct location ...
... and use the viewport handles to adjust the position of any tool graphically.

See results of some tools immediately after you place the tool on the image.

See results of any tool on its property pages – in design mode!



Click and drag one, two, or more ImageView controls onto the form and see your images, scenes, and view controls with completely different display properties:



- ◆ different setup of scene tabs, surface buttons, scroll bars, tools tips, temperature scale
- ◆ different scenes
- ◆ different surfaces
- ◆ different pseudo-coloring
- ◆ different zoom levels
- ◆ different aspect ratios

Use the built-in simulator to test your program by setting up the XCaliper controls to "acquire" and analyze a set of disk images in rapid succession.

XCaliper runs on standard personal computers under Microsoft® Windows NT®, using the power of 32-bit processing and MMX-acceleration. XCaliper's drag-and-drop, ActiveX® controls are compatible with Visual Basic® and Visual C++®.

FSI Automation, Inc.
A division of FLIR System, Inc.
190 West Dayton, Suite 202
Edmonds, WA 98020
425.673.7929
fsiautomation.com